

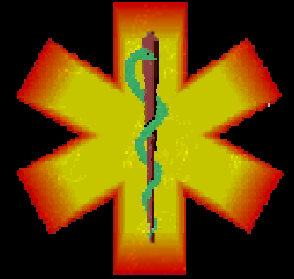
Simple

Triage

And

Rapid

Treatment



START Triage

START Triage



- Developed in California in the early 1980's by Hoag Hospital and Newport Beach Fire and Marine (California)
- Rapid approach to triaging large numbers of casualties
- Easy to remember

START Triage



- Initial patient assessment and treatment should take less than 30 seconds for each patient
- Patients are triaged based upon 4 factors
 - Ability to walk away from the scene
 - **R**espiration $>$ or $<$ 30 respirations per minute
 - **P**ulse – Radial pulse ? or capillary refill $<$ or $>$ 2 seconds
 - **M**ental Status – able/unable to follow simple commands

Respirations **P**ulse **M**ental Status

START Triage

- First - clear the walking wounded using verbal instructions.
 - Direct them to the treatment areas for detailed assessment and treatment
 - These Patients are triaged **MINOR**
- Now check your **RPMs**



START Triage

RPM

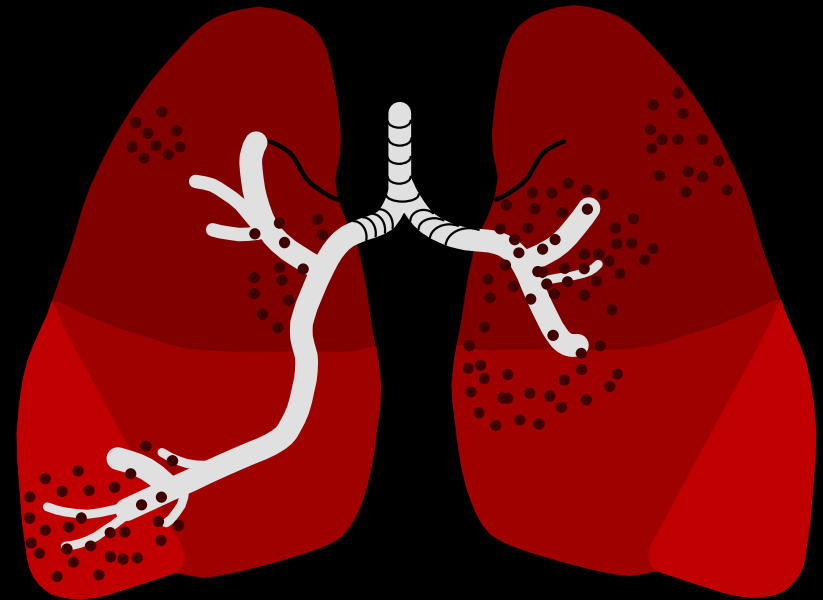
- Respiration's

- None - Open the Airway

- Still None? - **DECEASED**
- Restored?- **IMMEDIATE**

- Present?

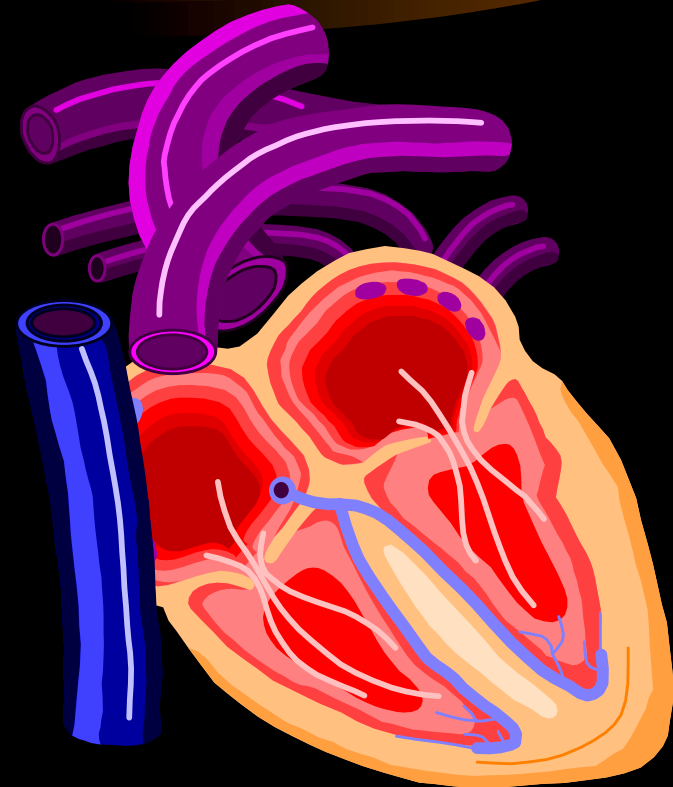
- Above **30** - **IMMEDIATE**
- Below **30** - **CHECK PERFUSION**



START Triage

RPM

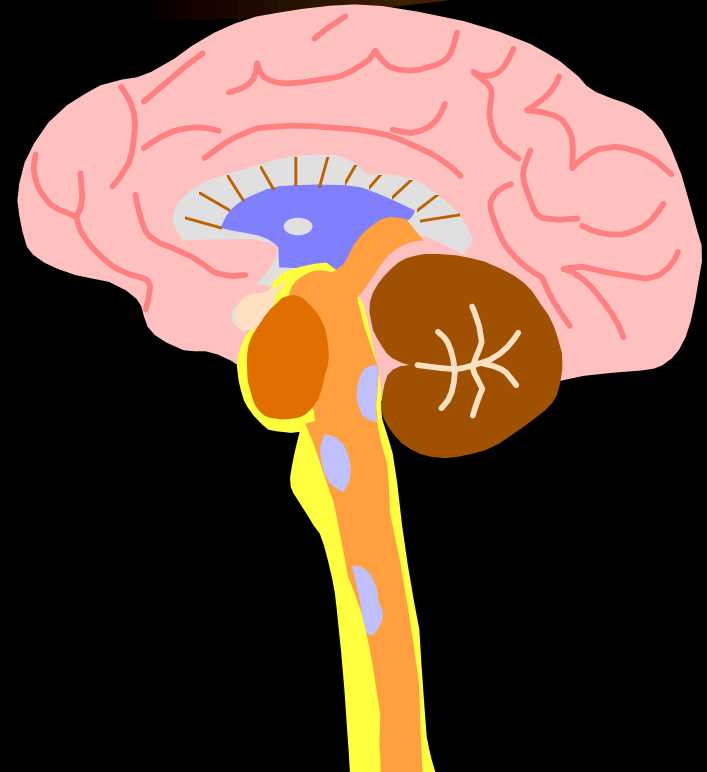
- **P**erfusion
 - Radial Pulse Absent
or
Capillary Refill > **2** secs
IMMEDIATE
 - Radial Pulse Present
or
Capillary Refill \leq **2** secs
CHECK MENTAL STATUS



START Triage

RPM

- **Mental Status**
 - **Can Not** Follow Simple Commands
(Unconscious or Altered LOC)
IMMEDIATE
 - **Can** Follow Simple Commands
DELAYED



START Triage



If patient is immediate – Code Red upon initial assessment, attempt *only* to correct airway blockage or uncontrolled bleeding before moving on to next patient.

START Triage

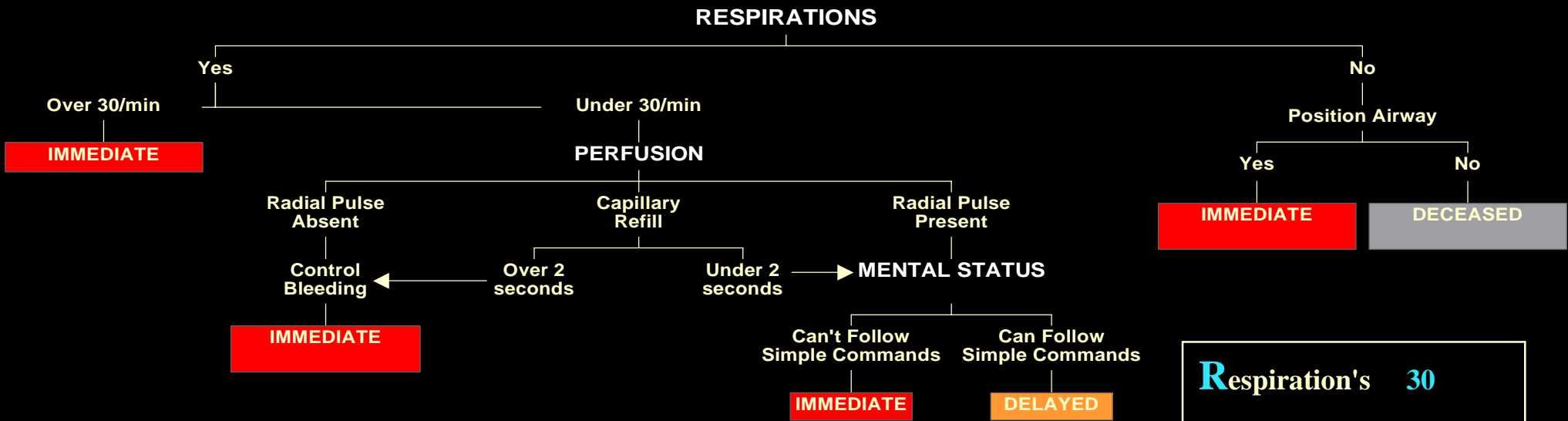
- When things get hectic with multiple patients rev up your RPM's.
 - **R** - Respiration - **30**
 - **P** - Perfusion - **2**
 - **M** - Mental status - **CAN do**



mnemonic: **30 – 2 – CAN DO**

START Triage

All Walking
Wounded
MINOR



R espiration's	30
P erfusion	2
M ental Status	CAN DO

START Triage



The **START** process permits a limited number of rescuers to rapidly triage a large number of patients without specialized training.

Patients are systematically moved to treatment areas where more detailed assessment and treatment are conducted.

START Triage



START Triage was Developed by the
Newport Beach (CA.)
Fire & Marine Department